



PERU: Poverty Reduction

and Nutrition Strategies led by the Government

Objectives	Development capabilities	Opportunities and access to the poor	Social Protection
Budgetary Strategic Programs	01 Nutritional Program 02 Maternal&Neonatal 03 Access to Identity	Results Based Budget initiated in 2007 <u>targeted</u> to poor areas	

Actors **EVIDENCE BASED (Lancet) MULTISECTORAL APPROACH**
 MOH, Conditioned Cash Transfer Program, Targeted Health Insurance to the Poor, Complementary Feeding Program, National Civil Registered Office, National Institute of Statistics.

ROUND TABLE TO FIGHT AGAINST POVERTY

Aligned with the National CRECER Strategy



Conceptual Model and Life Cycle

Causal chain of key health results between -9 months and 24 months

DAYS since conception →

0d 90d 270d 277d 457d 1000d

Key INTERVENTIONS

↑ Vaccines

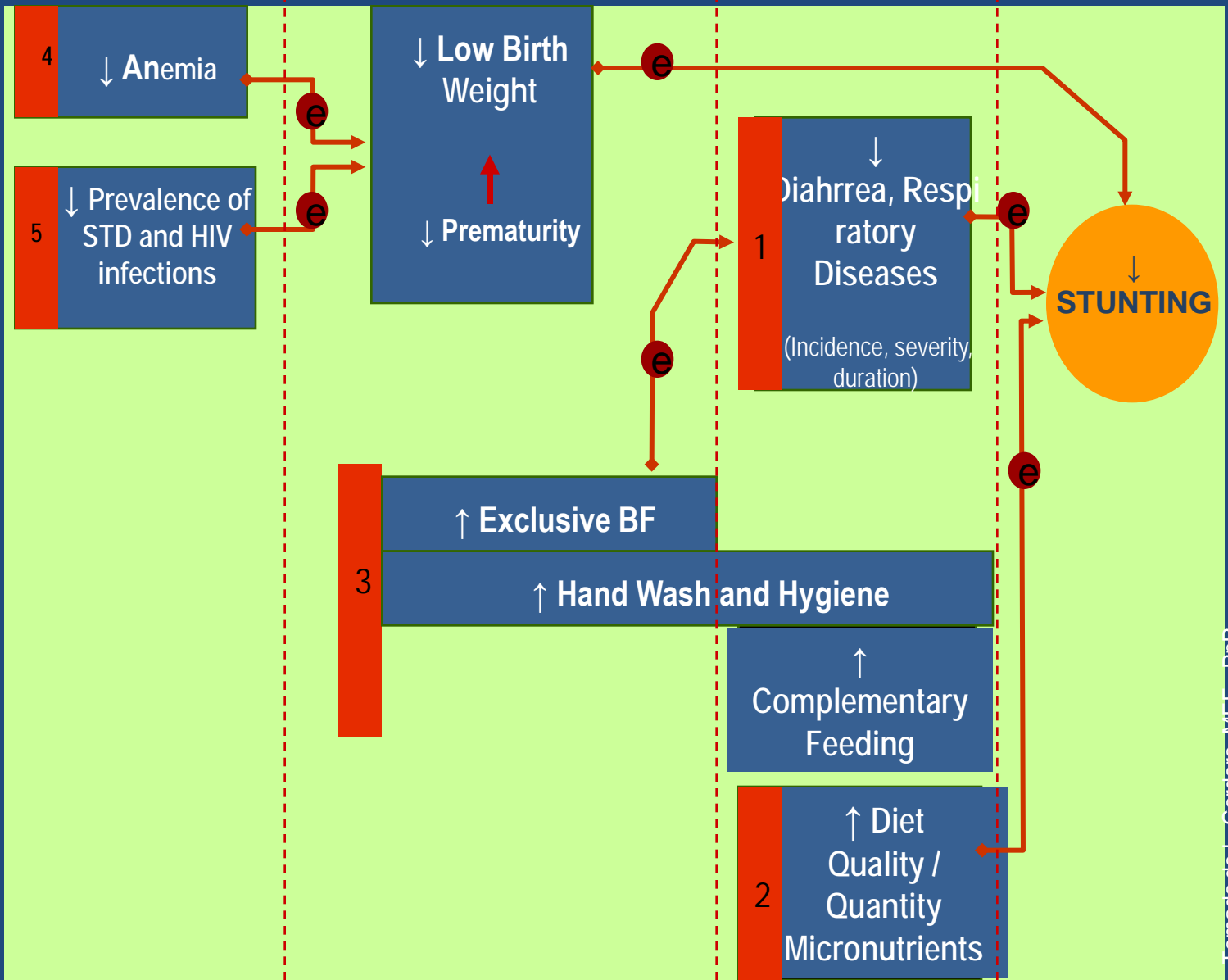
**Rotavirus
Neumococo**

↑ Growth Monitoring and Promotion

Counseling

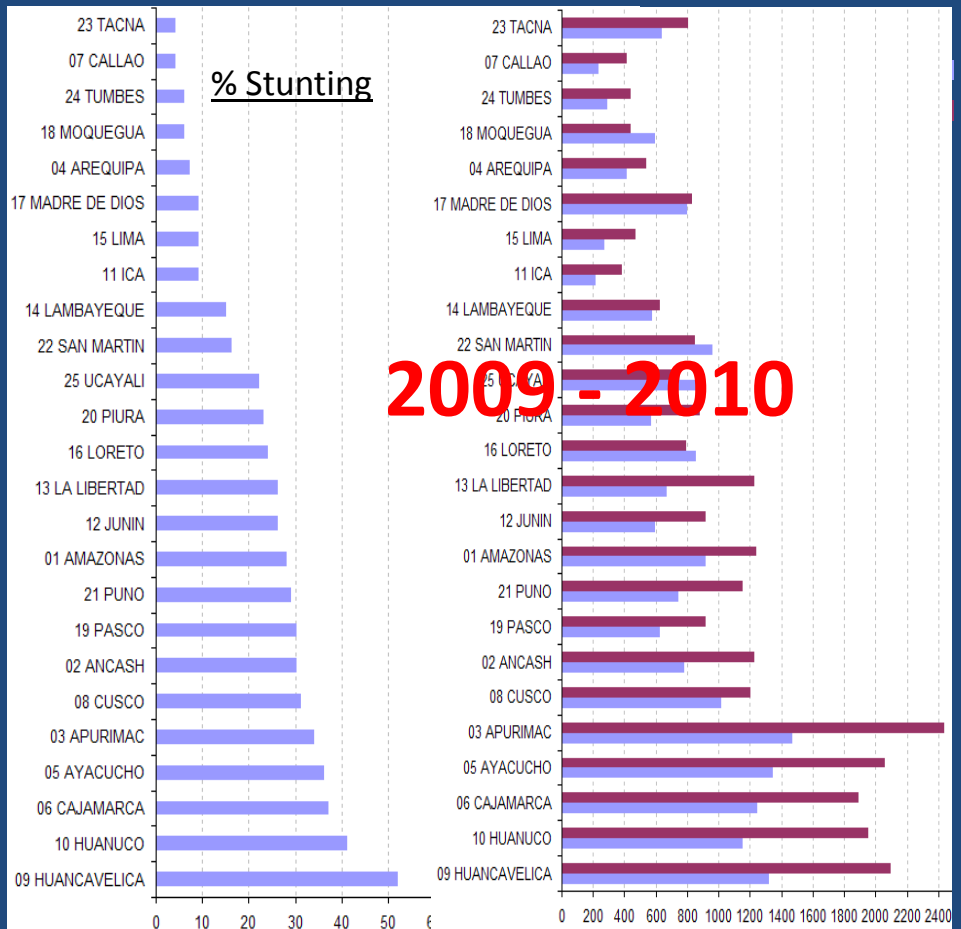
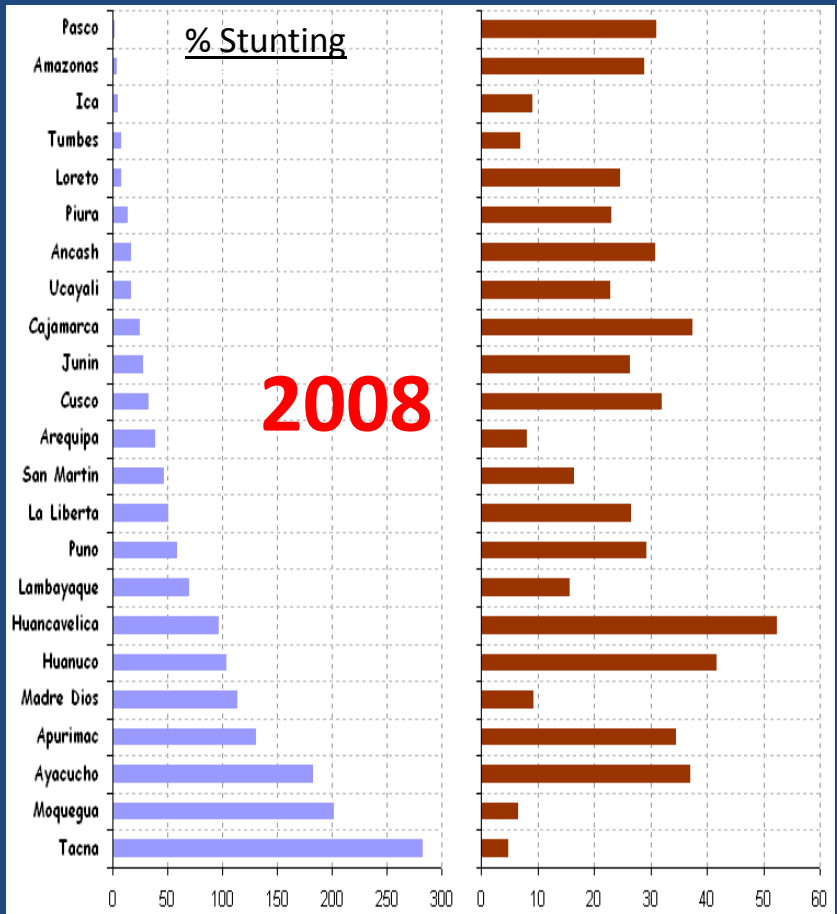
Food Demonstrative Session

Hygiene Practices





Budget allocation and Stunting prevalence by Region: 2008 vs 2009-2010



BUDGET PER CHILD UNDER 36 MONTHS OF AGE ALLOCATED BY REGIONAL GOVERNMENT (In Nuevos Soles)



Perú Resources for Nutrition: Public - Private - Int.Cooperation

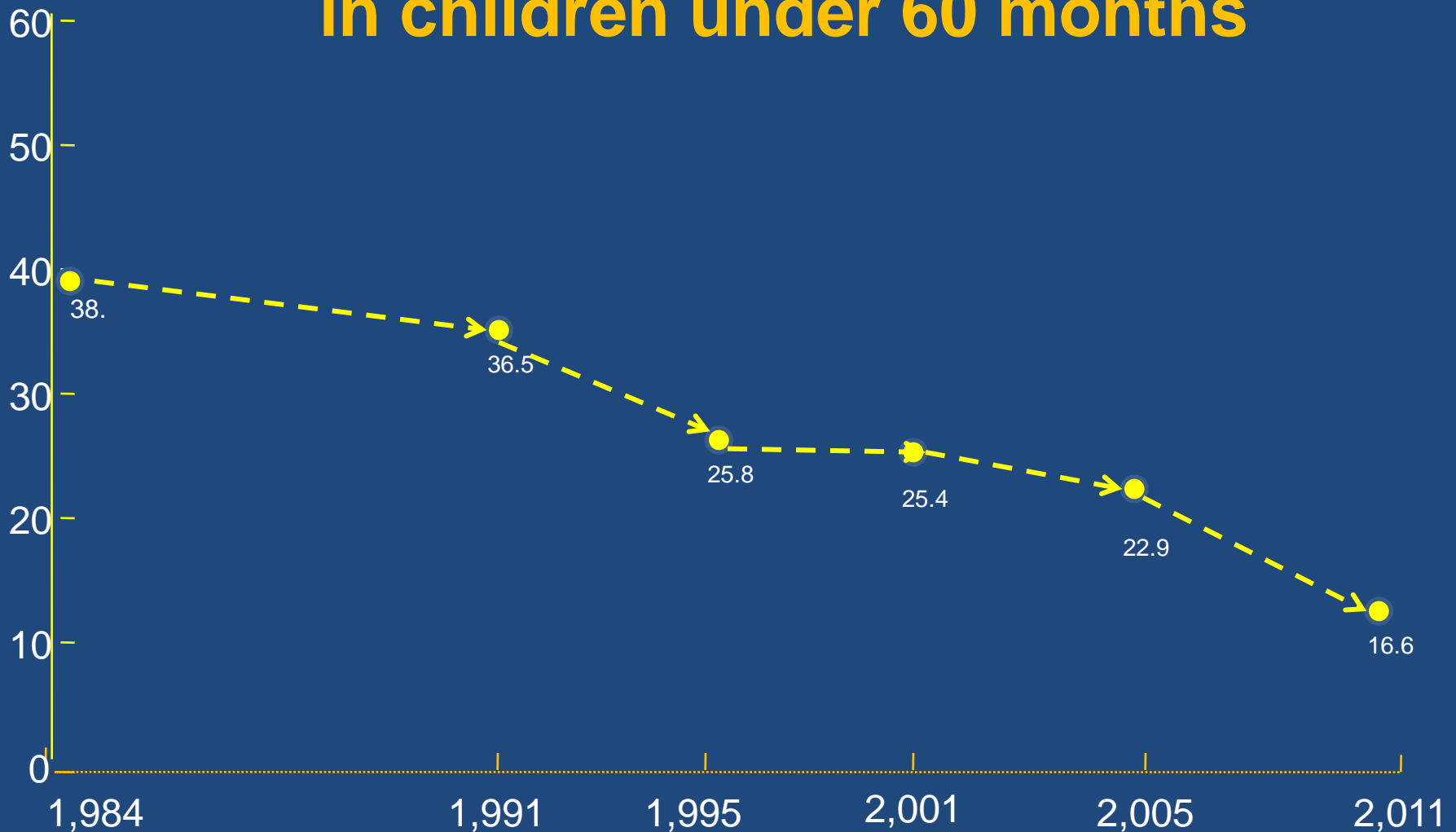
Resources	Year	US \$	Source
Public Resources	2011	650 M	Public
Social Responsibility of Mining Sector	2010	(*) 182 M	Private
UNION EUROPEA	2009-2013	60 M Euros	Internatl. (grant)
USAID	2011	(*) 11 M	Internatl. (grant)
UN System (PAHO-FAO-UNICEF-WFP)	2009-2012	6 M	Internatl. (grant)
Japan Social Development Fund- The World Bank	2011-2012	2 M	Internatl. (grant)
The World Bank – InterAmerican Development Bank -IDB	2009-2013	(*) 100 M	Internatl. (loan)
The World Bank (SWAP)	2011-2015	25 M	Internatl. (loan)

(*) Broader Scope Projects –Not only nutrition



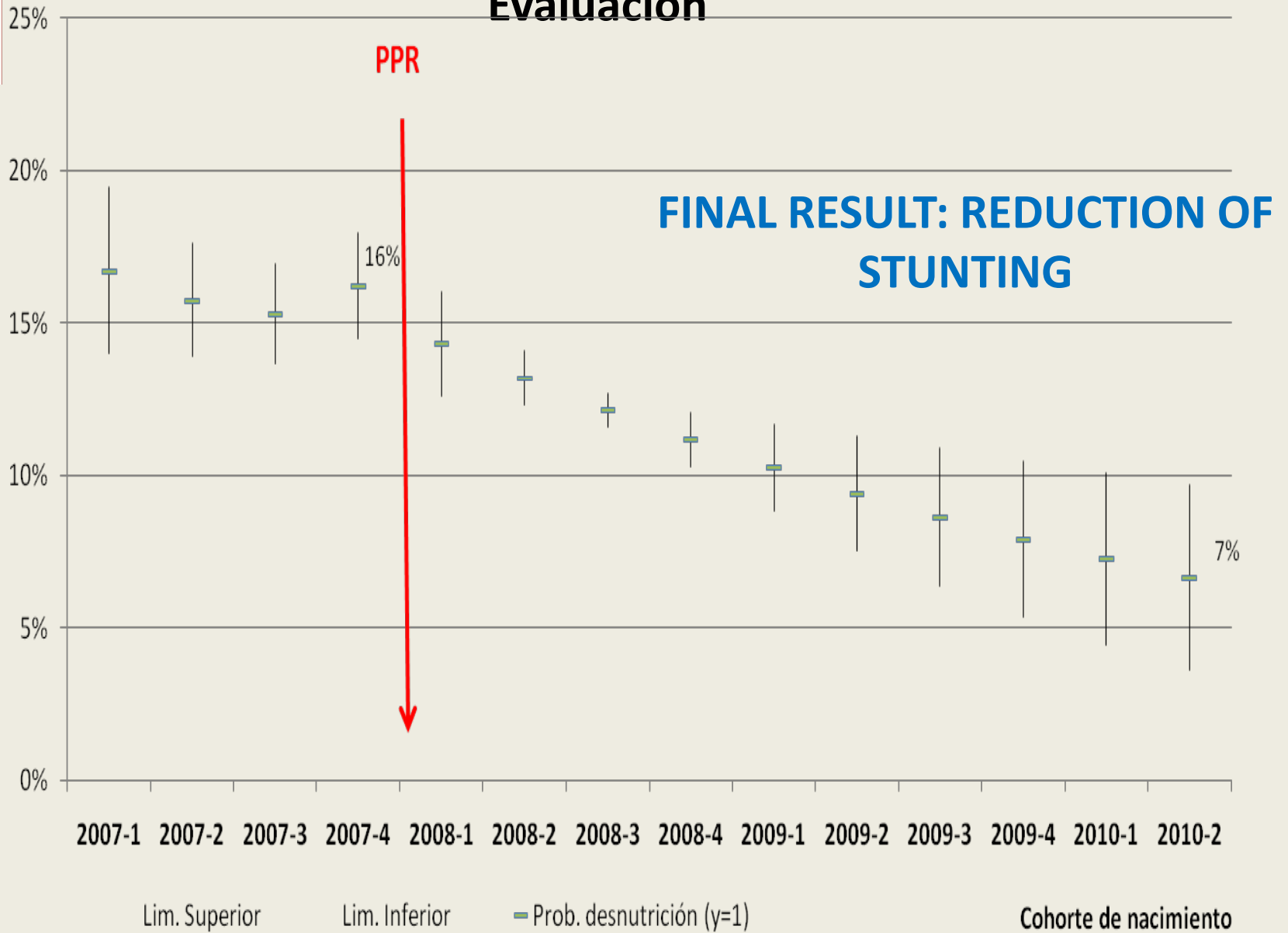
Perú

Chronic Undernutrition Reduction in children under 60 months





Evaluación



Children born after 2008 have a significantly lower probability of being stunted compared with children born before 2008